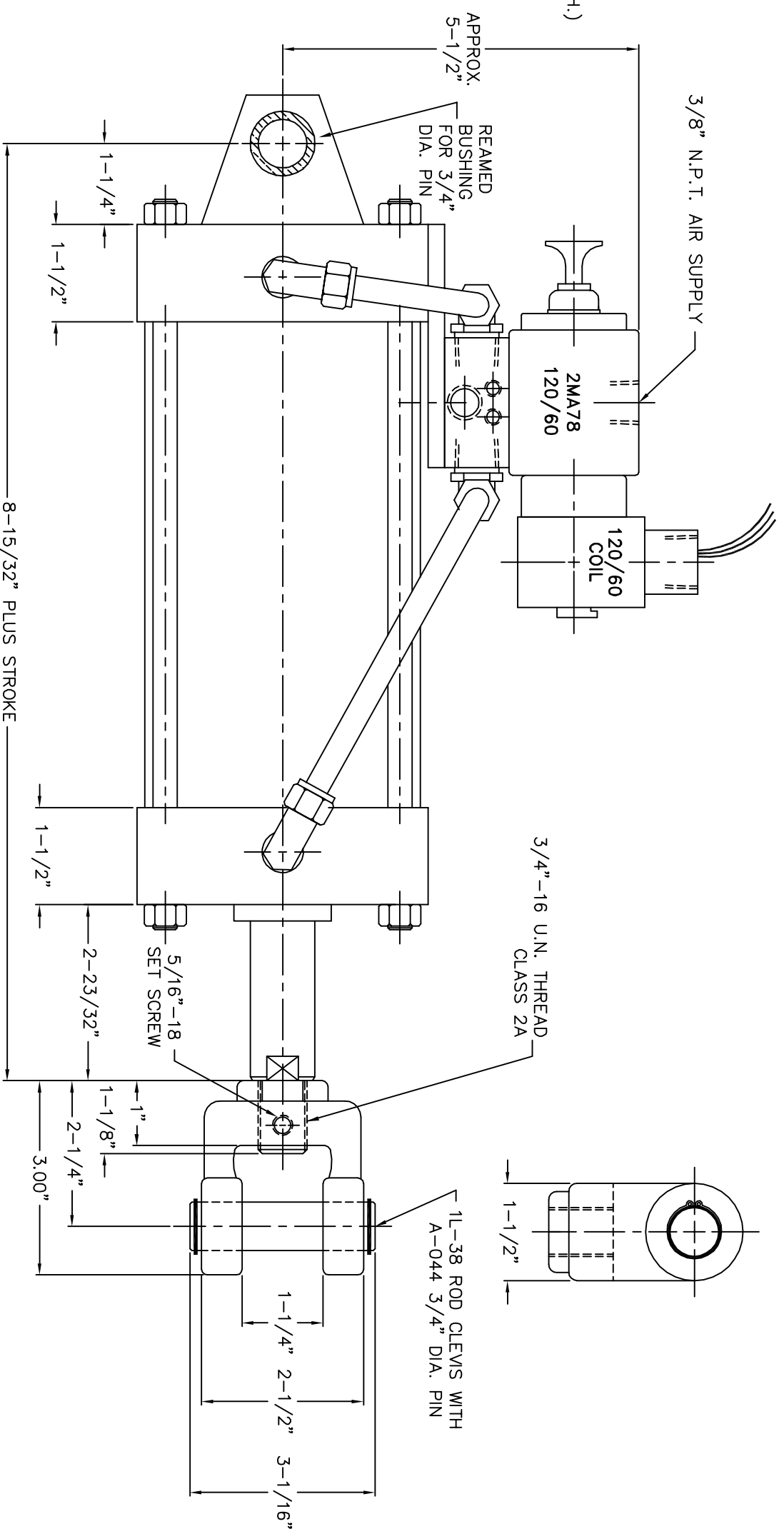
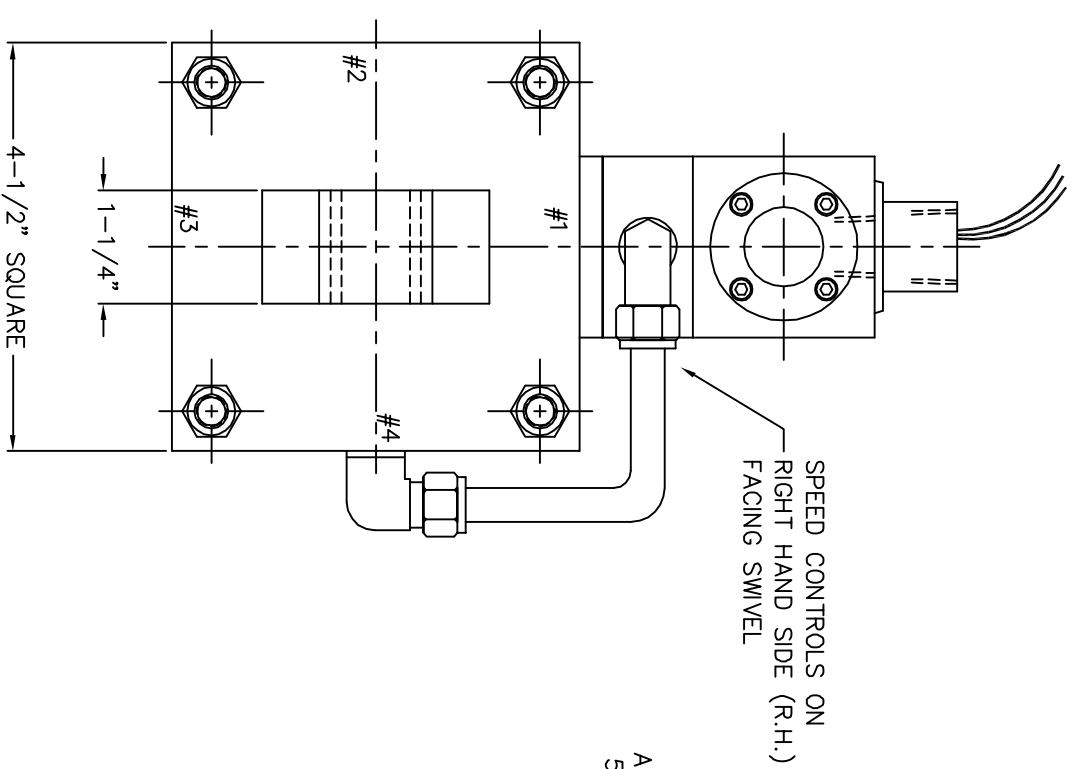


E-906-02

TOLERANCES UNLESS OTHERWISE NOTED:
 FRACTIONAL ± 1/64 INCH
 (2) PLACE DECIMAL ± .01 INCH
 (3) PLACE DECIMAL ± .005 INCH
 THREADS TO BE CLASS (2) FIT

THIS DRAWING IN DESIGN AND DETAIL IS OUR
 PROPERTY AND IS TO BE USED ONLY IN
 CONNECTION WITH OUR WORK. ALL RIGHTS OF
 DESIGN OR INVENTION RESERVED.
 APPLIED FOR AND PENDING.

CHANGE RECORD		BY	DATE
A			



B/M-1940-4
 F40S0706AN8MA1
 HDF 4.00" BORE AIR MOTOR - NON CUSHIONED
 1.00" DIAMETER STAINLESS STEEL PISTON ROD
 #8M (MP3) FIXED PIVOT CAP END MOUNTING
 WITH LEHIGH 4-WAY SLIDE VALVE #2MA78 (120/60 COIL)
 PISTON ROD NORMALLY EXTENDED WHEN
 SOLENOID ON VALVE IS DE-ENERGIZED
 SPEED CONTROL ADJUSTMENT SCREWS FACING
 RIGHT HAND (R.H.) SIDE OF SWIVEL
 VALVE POSITION #1
 PORTS POSITION #4
 SPEED CONTROLS FACE POSITION #4
 "A" = 1-1/8" (LONG)
 "KK" = 3/4"-16 (MALE THREAD)
 "WF" = 2-23/32"

LEHIGH FLUID POWER, INC.
 STANDARD CONFIGURATION IS:
 SPEEDS FACE RIGHT HAND (R.H.) &
 ROD EXTENDED WHEN DE-ENERGIZED

ROD SHOWN FULLY RETRACTED
 ROD IS NORMALLY EXTENDED WHEN
 SOLENOID IS DE-ENERGIZED

WITH 1L-38 ROD CLEVIS
 AND A-044 CLEVIS PIN

DATE	MATERIAL	NOTED	DRAWN	CHECKED	SCALE	DESCRIPTION	LEHIGH	2D-306-3
10/18/06			MJD	--	NTS	B/M-1940-4 (F40S0706AN8MA1) ROD NORMALLY EXTENDED, RIGHT HANDED	LEHIGH FLUID POWER, INC. LAMBERTVILLE, NJ 08530	DESTROY ALL PRINTS OF PREVIOUS ISSUE