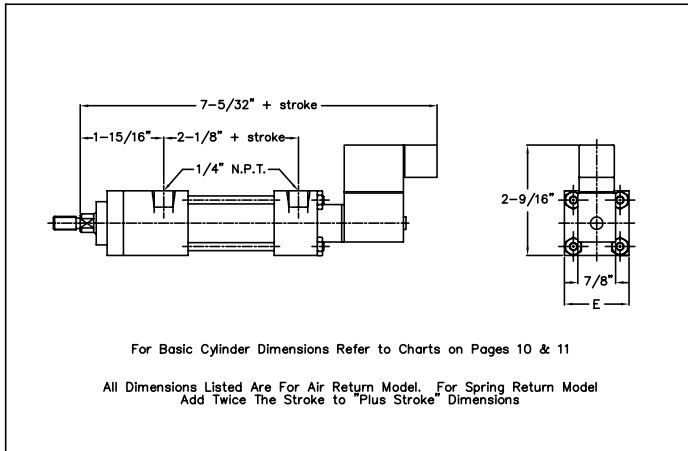




JHDA AIR MOTOR AIR CYLINDER WITH MOUNTED VALVE

JHDA 01 AIR MOTOR: 1" DIA. BORE



The JHDA 01 series air motor combines the rugged 1" dia. bore JHD 01 heavy duty air cylinder (pp.12-13) with an electric solenoid valve to create a cylinder and valve designed as a unit. One electrical connection and a single air supply line to the valve-in-head end of the cylinder simplifies installation. (For an air return model, a constant pressure air line must be connected to the rod end port of the cylinder.)

The standard valve used is a miniature 3-way solenoid operated valve, 110 volt, 60 cycle, with power consumption of 6 watts, continuous duty rated, Class A, molded coil. The electric connection is via spade terminal coil with ground per DIN 43650. Other coil voltage, connectors and enclosures are available.

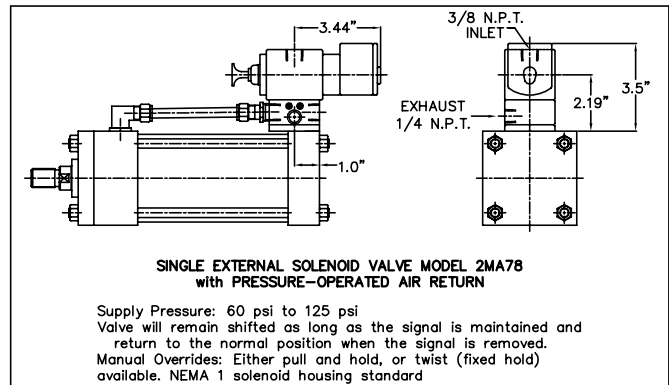
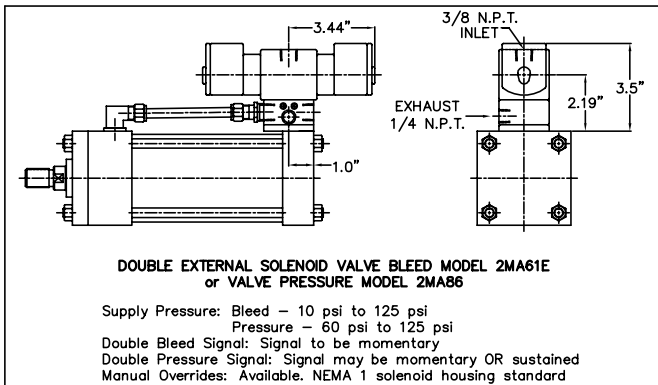
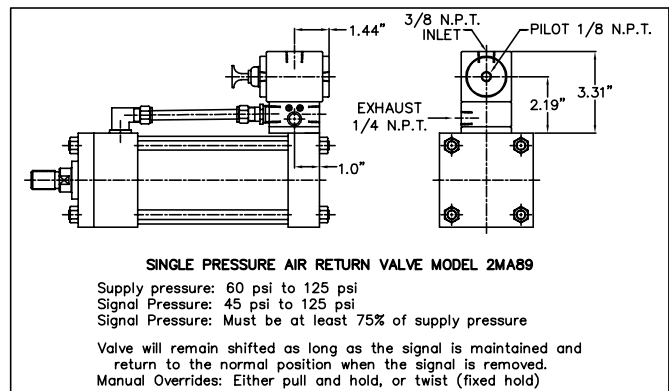
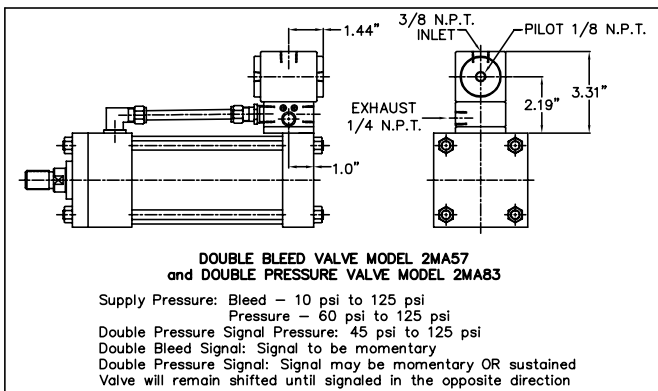
The JHD01 cylinder mountings available are: 01, 04, 06, 09, 10, 11, 12, 13 (see pp. 12-13).

Consult factory for available options such as Miracalube[®], spring return, and low pressure air operation, or for specials

JHDA AIR MOTOR: 1 1/2" to 8" DIA. BORE

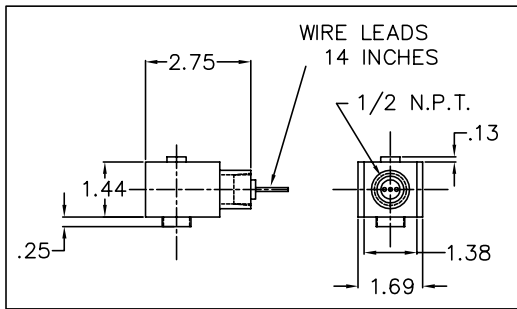
The JHDA series air motor in sizes from 1 1/2" to 8" dia bore features the JHD heavy duty air cylinder and Lehigh's 4-way Slide Valve to create a linear motion, quick-response power package. This combination unit eases installation and reduces power and maintenance costs.

A variety of cylinder mounting designs is available, as well as electric solenoid options. See pp.14-28 for JHD cylinder information and p.40 for description of the slide valve features and function.



JHDA AIR MOTOR (Cont.)

SPECIAL ELECTRICAL COIL



The special electrical coil shown at the left is available at extra charge. This water-tight and explosion proof enclosure is for indoor or outdoor use in NEMA groups 4, 6, 7C, 7D, 9E, 9F 9G and 12.

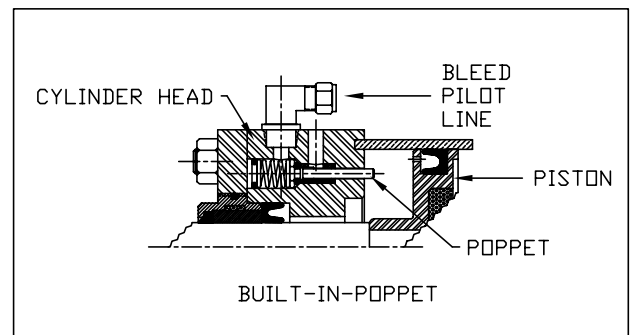
Piping arrangements are slightly different from the standard NEMA 1 housing.

Specify "NEMA 4, 7, and 9."

AUTOMATIC AIR MOTOR

AUTOMATIC AIR MOTOR: 2" to 8" DIA. BORE

The JHDA series automatic air motor in sizes from 2" to 8" dia bore use built-in poppets to provide the signal for automatic operation of the JHD heavy duty air cylinder. External limit valves, micro-switches and push rods are eliminated. Mounted internally in the head, the poppets bleed off the signal side of the control valve when the piston depresses the poppet stem at the end of the stroke. Safe, reliable, and positive, the system provides a simple and low cost method of automatic operation.

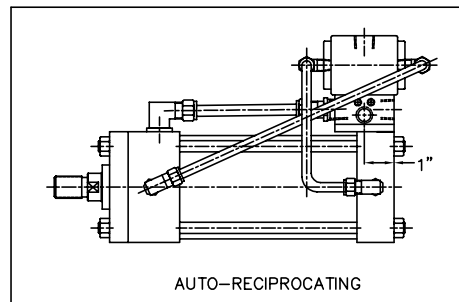
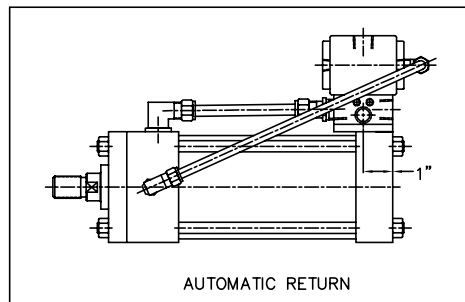


AUTOMATIC RETURN

Automatic return air motors have the built-in poppet in one head to automatically reverse the stroke from the normally retracted or normally extended position. The start cycle may be controlled by bleed or electrical signals

AUTOMATIC RECIPROCATING

Automatic reciprocating air motors have the built-in poppets in both heads and will maintain a reciprocating action as long as the air supplied is provided. A start-stop selector valve may be installed in either pilot line to assure that the stroke will terminate at one extreme or the other.



All the mounting styles of the JHD air cylinder are available for the automatic air motor.

The 2" dia. bore automatic air motor is limited to a maximum 5/8" diameter rod size. The 2-1/2" dia. bore automatic air motor is limited to a maximum 1" diameter rod size. There is no rod diameter limitation on larger bore sizes.

ORDERING INFORMATION FOR JHDA AIR MOTORS

Use the ordering part number system shown on p.33 for the standard JHD air cylinder. The air motor is designated in the last two places with "01". Note the requirements and restrictions for the particular type of air motor described in this section, and add the applicable description; e.g., valve model, voltage, optional electric enclosure, automatic return air motor, etc.